

Safeguarding policy



Approved by: The Trust Board

Date: 15 July 2020

Last reviewed on: June 2020

Next review due by: July 2021

Contents

1. Safeguarding statement and aims	2
2. Legislation and statutory guidance	3
3. Definitions.....	5
4. Equality statement	5
5. Roles and responsibilities	6
6. Confidentiality	8
7. Recognising abuse and taking action.....	8
8. Notifying parents.....	14
9. Pupils with special educational needs and disabilities.....	14
10. Mobile phones and cameras.....	15
11. Complaints and concerns about safeguarding practices	15
12. Record-keeping	15
13. Training.....	17
14. Monitoring arrangements	20
15. Links with other policies	20
Appendix 1: types of abuse.....	20
Appendix 2: safer recruitment and DBS checks – policy and procedures.....	21
Appendix 3: allegations of abuse made against staff	24
Appendix 4: specific safeguarding issues	29
Annex B: Role of the Designated Safeguarding Lead	35

1. Safeguarding statement and aims

The trust believes in supporting all aspects of children and young people’s development and learning, and keeping children safe. We understand that emotional and social aspects of learning create a foundation for all academic learning. If a child has not been supported to understand, express and resolve their feelings, they may not have the ability to share with other children, resolve the small conflicts that arise in day-to-day classroom life, or concentrate on learning. Their frustrations may cause a range of antisocial, disruptive, overly compliant or withdrawn behaviours. All staff who work at the trust will ensure that:

- Children and young people are listened to, valued and respected
- Staff are aware of indicators of abuse and know how to share their concerns appropriately
- All paid and unpaid staff are subject to rigorous recruitment procedures
- All paid and unpaid staff are given appropriate support and training

Education staff play a crucial role in helping to identify welfare concerns, and indicators of possible abuse or neglect, at an early stage. The trust is committed to referring those concerns via the Designated Safeguarding Lead (DSL) to the appropriate local authority children’s social care, contributing to the assessment of a child’s needs and, where appropriate, to ongoing action to meet those needs. In order to ensure children are adequately protected the trust will ensure that:

- All DSLs, Deputy/Alternate DSLs and named safeguarding governors will attend specialised training appropriate for their positions, which will be updated at least every two years (records of this training will be kept by the trust safeguarding lead).
- All new staff, teaching and support, paid and volunteers, will receive up to date safeguarding training that is endorsed by the three local safeguarding partners. A log of staff safeguarding training is kept by the DSL. On their first day, as part of their induction, all new staff will receive a copy of this policy and the trust’s staff and persons in a position of trust code of conduct, their school’s child protection procedures and behaviour policy, as well as Part one and Annex A of Keeping Children Safe in Education (September 2020). The new staff member and the DSL will sign to evidence that the induction has been completed. The trust will ensure that mechanisms are in place to assist staff to understand and discharge their role and responsibilities as set out in Part one of Keeping Children Safe in Education (September 2020). Whenever this policy is reviewed and updated the trust will ensure that all staff receive a copy; each school will insist that staff sign a register to confirm that

they have read and understood the current version. The DSL provides staff with regular updates, which may be via email as well as during staff meetings, PD days and through safeguarding displays. In addition, all staff must complete [Prevent awareness e-learning](#), which should be refreshed whenever the Home Office's e-learning course is updated. Copies of Prevent training certificates are kept by the DSL. All members of staff will be advised to ensure that their behaviour or actions do not place pupils or themselves at risk of harm or of allegations of harm to a pupil. This is also highlighted in the staff and persons in a position of trust code of conduct.

- All children, young people and their families have access to their school's child protection procedures via the school's website
- The trust safeguarding policy and individual school's child protection procedures are reviewed on an annual basis by the trust, in consultation with headteachers

The trust aims to ensure that:

- Appropriate action is taken in a timely manner to safeguard and promote children's welfare
- All staff are aware of their statutory responsibilities with respect to safeguarding
- Staff are properly trained in recognising and reporting safeguarding issues
- Pupils are taught about safeguarding, including online safety. This may include covering relevant issues for schools through Relationships Education (for all primary pupils) and Relationships and Sex Education (for all secondary pupils) and Health Education (for all pupils in state-funded schools) which will be compulsory from September 2020. Schools have flexibility to decide how they discharge their duties effectively within the first year of compulsory teaching and are encouraged to take a phased approach (if needed) when introducing these subjects. The following resources may help:
 - The Department for Education's non-statutory guidance: [Teaching online safety in schools](#).
 - Annex C of the Department for Education's statutory guidance, Keeping Children Safe in Education (September 2020) includes additional information on how to support keeping children safe online when they are learning at home.
 - UK Council for Internet Safety (UKCIS) guidance: [Education for a connected world](#) ○ National Crime Agency's CEOP education programme: [Thinkuknow](#) ○ Public Health England: [Rise Above](#)
- Appropriate filters and monitoring systems are in place

2. Legislation and statutory guidance

This policy is based on the Department for Education's statutory guidance, [Keeping Children Safe in Education \(September 2020\)](#) and [Working Together to Safeguard Children](#), and the [Governance Handbook](#). It should be read alongside the Department for Education's advice, [COVID-19: safeguarding in schools, colleges and other providers](#). We comply with this guidance and the procedures set out by our three local safeguarding partners.

This policy is also based on the following legislation:

- Part 3 of the schedule to the [Education \(Independent Trust Standards\) Regulations 2014](#), which places a duty on academies to safeguard and promote the welfare of pupils at the school
- [The Children Act 1989](#) (and [2004 amendment](#)), which provides a framework for the care and protection of children
- Section 5B(11) of the Female Genital Mutilation Act 2003, as inserted by section 74 of the [Serious Crime Act 2015](#), which places a statutory duty on teachers to report to the police where they discover that female genital mutilation (FGM) appears to have been carried out on a girl under 18

- [Multi-agency statutory guidance on female genital mutilation](#), which sets out responsibilities with regards to safeguarding and supporting girls affected by FGM
- [The Rehabilitation of Offenders Act 1974](#), which outlines when people with criminal convictions can work with children
- Schedule 4 of the [Safeguarding Vulnerable Groups Act 2006](#), which defines what 'regulated activity' is in relation to children
- Statutory [guidance on the Prevent duty](#), which explains schools' duties under the Counter-Terrorism and Security Act 2015 with respect to protecting people from the risk of radicalisation and extremism

The [Childcare \(Disqualification\) and Childcare \(Early Years Provision Free of Charge\) \(Extended Entitlement\) \(Amendment\) Regulations 2018](#) and [Childcare Act 2006](#), which set out who is disqualified from working with children

- [Information sharing: Advice for practitioners providing safeguarding services to children, young people, parents and carers](#)
- [What to do if you're worried a child is being abused](#)
- [Guidance for safer working practice](#)
- [Sexting in schools and colleges](#)

This policy also meets requirements relating to safeguarding and welfare in the [statutory framework for the Early Years Foundation Stage](#).

This policy also complies with our funding agreement and articles of association.

3. Definitions

Safeguarding and promoting the welfare of children means:

- Protecting children from maltreatment
- Preventing impairment of children's mental and physical health or development
- Ensuring that children grow up in circumstances consistent with the provision of safe and effective care
- Taking action to enable all children to have the best outcomes

Child protection is part of this definition and refers to activities undertaken to prevent children suffering, or being likely to suffer, significant harm.

Abuse is a form of maltreatment of a child, and may involve inflicting harm or failing to act to prevent harm. Appendix 1 explains the different types of abuse.

Neglect is a form of abuse and is the persistent failure to meet a child's basic physical and/or psychological needs, likely to result in the serious impairment of the child's health or development. Appendix 1 defines neglect in more detail.

Children includes everyone under the age of 18.

4. Equality statement

Some children have an increased risk of abuse, and additional barriers can exist for some children with respect to recognising or disclosing it. We are committed to anti-discriminatory practice and recognise children's diverse circumstances. We ensure that all children have the same protection, regardless of any barriers they may face.

We give special consideration to children who:

- Have special educational needs or disabilities (see section 9)
- Are young carers
- May experience discrimination due to their race, ethnicity, religion, gender identification or sexuality
- Have English as an additional language
- Are known to be living in difficult situations – for example, temporary accommodation or where there are issues such as substance abuse or domestic violence
- Are at risk of FGM, sexual exploitation, forced marriage, or radicalisation
- Are asylum seekers
- Are at risk due to either their own or a family member's mental health needs
- Are looked after or previously looked after

5. Roles and responsibilities

Safeguarding and child protection is **everyone's** responsibility. This policy applies to all staff, volunteers and governors in the trust and is consistent with the procedures of the three local safeguarding partners where we have schools. Our policy and procedures also apply to extended school and off-site activities.

We contribute to multi-agency working in line with statutory guidance Working together to safeguard children. We work with social care, the police, health services and other services to promote the welfare of children and protect them from harm. This includes providing a coordinated offer of early help when additional needs of children are identified and contributing to inter-agency plans to provide additional support to children subject to child protection plans. We allow access for children's social care from the host local authority and, where appropriate, from a placing local authority, for that authority to conduct, or to consider whether to conduct, statutory assessments. **5.1 The trust**

In addition to this policy, the trust will:

- monitor the effectiveness of safeguarding through annual safeguarding reviews in every trust school and have at least one of these externally reviewed each year
- provide a staff and persons in a position of trust code of conduct
- provide a whistleblowing policy
- provide recruitment and selection policy and guidance to ensure safer recruitment
- provide every DSL with an annual safeguarding/child protection update (prior to the autumn term), reflecting changes in statutory requirements and current issues
- keep a log of all referrals made to the local authority designated officer (LADO) by trust schools
- liaise with local authority lead professionals for safeguarding, the three local safeguarding partners, Ofsted, the ESFA and other agencies as required

5.2 All staff

All staff will sign to confirm they have read and understood Part one and Annex A of the Department for Education's statutory safeguarding guidance, [Keeping Children Safe in Education \(September 2020\)](#), and review this guidance at least annually. All staff will be aware of:

- Our systems which support safeguarding, including the staff and persons in a position of trust code of conduct, their school's child protection procedures and the role of the designated safeguarding lead (DSL)
- The early help process (sometimes known as the common assessment framework) and their role in it, including identifying emerging problems, liaising with the DSL, and sharing information with other professionals to support early identification and assessment
- The process for making referrals to local authority children's social care and for statutory assessments that may follow a referral, including the role they might be expected to play
- What to do if they identify a safeguarding issue or a child tells them they are being abused or neglected, including specific issues such as FGM, and how to maintain an appropriate level of confidentiality while liaising with relevant professionals
- The signs of different types of abuse and neglect, as well as specific safeguarding issues, such as child sexual exploitation (CSE), children missing from education, child criminal exploitation, FGM, radicalisation and peer on peer abuse

Section 13 and appendix 4 of this policy outline in more detail how staff are supported to do this.

5.3 The designated safeguarding lead (DSL)

All our schools have a named DSL whose details are in the school's child protection procedures. The DSL is a senior member of staff with the authority to take lead responsibility for child protection and wider safeguarding. Annex B provides a job description for the DSL.

During term time, the DSL will be available during school hours for staff to discuss any safeguarding concerns.

When the DSL is absent, named deputies will act as cover. Their details are in the school's child protection procedures.

The DSL will be given the time, funding, training, resources and support to:

- Provide advice and support to other staff on child welfare and child protection matters
- Ensure that cover is provided for the role when they are absent from the school

- Take part in strategy discussions and inter-agency meetings and/or support other staff to do so
Contribute to the assessment of children
- Refer suspected cases, as appropriate, to the relevant body (local authority children's social care, Channel programme, Disclosure and Barring Service, and/or police), and support staff who make such referrals directly
- Cooperate with any requests for information from the local authority, such as training returns or annual safeguarding self-reviews, in compliance with Section 11 of the Children Act 2004
- Ensure that staff, volunteers (including governors), pupils and their parents are aware of the school's child protection procedures
- Ensure that all staff receive appropriate safeguarding/child protection training and maintain training records
- Ensure that pupils' child protection records are transferred securely and separately from the main pupil file whenever pupils transfer to a new school. In addition to the child protection file, consider if it would be appropriate to share any information with the new school or college in advance of a child leaving. For example, information that would allow the new school or college to continue supporting victims of abuse and have that support in place for when the child arrives.

The DSL will also keep the headteacher informed of any issues, and liaise with local authority case managers and designated officers for child protection concerns as appropriate.

The full responsibilities of the DSL, and named deputy DSLs, are set out in their job descriptions.

5.4 The designated teacher

All our schools have a designated teacher whose details are in the school's child protection procedures.

They must have appropriate training and the relevant skills and experience to work with local authorities to promote the educational achievement of registered pupils who are looked after. Under section 6 of the Children and Social Work Act 2017, they will also have responsibility for promoting the educational achievement of children who have left care through adoption, special guardianship or child arrangement orders or who were adopted from state care outside England and Wales.

A previously looked after child remains potentially vulnerable and all staff should have the skills, knowledge and understanding to keep them safe.

5.5 The local governing body

The local governing body will hold the headteacher to account for its implementation and the implementation of the school's child protection procedures.

The local governing body will appoint a named safeguarding governor to monitor the effectiveness of this policy in conjunction with the full local governing body. This is always a different person from the DSL. The relevant trust director of education will act as the 'case manager' in the event that an allegation of abuse is made against the headteacher, where appropriate (see appendix 3).

5.6 The headteacher

The headteacher is responsible for the implementation of this policy and the implementation of the school's child protection procedures, including:

- Ensuring that staff (including temporary staff) and volunteers are informed of the school's child protection procedures as part of their induction
- Communicating the school's child protection procedures to parents when their child joins the school and via the school website
- Ensuring that the DSL has appropriate time, funding, training and resources, and that there is always adequate cover if the DSL is absent
- Ensuring that all staff undertake appropriate safeguarding and child protection training and update this regularly
- Acting as the 'case manager' in the event of an allegation of abuse made against another member of staff or volunteer, where appropriate (see appendix 3)
- Ensuring the relevant staffing ratios are met, where applicable

-
- Making sure each child in the Early Years Foundation Stage is assigned a key person

6. Confidentiality

- Timely information sharing is essential to effective safeguarding
- Fears about sharing information must not be allowed to stand in the way of the need to promote the welfare, and protect the safety, of children
- The Data Protection Act (DPA) 2018 and GDPR do not prevent, or limit, the sharing of information for the purposes of keeping children safe
- If staff need to share 'special category personal data', the DPA 2018 contains 'safeguarding of children and individuals at risk' as a processing condition that allows practitioners to share information without consent if it is not possible to gain consent, it cannot be reasonably expected that a practitioner gains consent, or if to gain consent would place a child at risk
- Under Schedule 3, Part 4, Paragraph 19 of the DPA 2018 schools are exempt from providing pupils' personal data where the serious harm test is met. For example, in a situation where a child is in a refuge or another form of emergency accommodation, and the serious harm test is met. Where in doubt we may seek independent legal advice.
- Staff should never promise a child that they will not tell anyone about a report of abuse, as this may not be in the child's best interests
- The government's [information sharing advice for safeguarding practitioners](#) includes 7 'golden rules' for sharing information, and will support staff who have to make decisions about sharing information
- If staff are in any doubt about sharing information, they should speak to the designated safeguarding lead (or deputy)
- Confidentiality is also addressed in this policy with respect to record-keeping in section 12, and allegations of abuse against staff in appendix 3

7. Recognising abuse and taking action

Staff, volunteers and governors must follow the procedures set out below in the event of a safeguarding issue.

7.1 If a child is in immediate danger

Make a referral to children's social care and/or the police **immediately** if a child is in immediate danger or at risk of harm. **Anyone can make a referral.** The NPCC's [When to call the police](#) should help designated safeguarding leads understand when they should consider calling the police and what to expect when they do.

Tell the DSL (see section 5.2) immediately if you make a referral directly.

Local procedures for making a referral, as agreed with the three local safeguarding partners, are set out in each school's child protection procedures.

The following link to the GOV.UK webpage for reporting child abuse to your local council, allows you to enter your postcode and provides contact details for your local authority:

<https://www.gov.uk/report-child-abuse-to-local-council>

7.2 If a child makes a disclosure to you

If a child discloses a safeguarding issue to you, you should:

- Listen to and believe them. Allow them time to talk freely and do not ask leading questions
- Stay calm and do not show that you are shocked or upset
- Tell the child they have done the right thing in telling you. Do not tell them they should have told you sooner
- Explain what will happen next and that you will have to pass this information on. Do not promise to keep it a secret
- Write up your conversation as soon as possible in the child's own words. Stick to the facts, and do not put your own judgement on it. The trust has a recording form for safeguarding concerns, the

school's child protection procedures will say where these can be found. Alternatively, concerns may be recorded in CPOMS

Sign and date the write-up and pass it on to the DSL or record it in CPOMS without delay.

Alternatively, if appropriate, make a referral to children's social care and/or the police directly (see 7.1), and tell the DSL immediately that you have done so

7.3 If you discover that FGM has taken place or a pupil is at risk of FGM

The Department for Education's Keeping Children Safe in Education (September 2020) explains that FGM comprises "all procedures involving partial or total removal of the external female genitalia, or other injury to the female genital organs".

FGM is illegal in the UK and a form of child abuse with long-lasting, harmful consequences. It is also known as 'female genital cutting', 'circumcision' or 'initiation'.

Possible indicators that a pupil has already been subjected to FGM, and factors that suggest a pupil may be at risk, are set out in appendix 4.

All staff should speak to the DSL and follow local safeguarding procedures with regard to any concerns about FGM. There is a specific **legal duty on teachers**. If a teacher, in the course of their work in the profession, discovers that an act of FGM appears to have been carried out on a girl under the age of 18, the teacher must report this to the police. This is a statutory duty, and teachers will face disciplinary sanctions for failing to meet it.

The duty above does not apply in cases where a pupil is *at risk* of FGM or FGM is suspected but is not known to have been carried out. Staff should not examine pupils.

7.4 If you have concerns about a child (as opposed to a child being in immediate danger)

Figure 1 illustrates the procedure to follow if you have concerns about a child's welfare and the child is not in immediate danger.

Where possible, speak to the DSL first to agree a course of action. Alternatively, make a referral to local authority children's social care directly (see 'Referral' below). Sources of advice before making a referral to the local authority are in each school's child protection procedures.

You can also contact the charity NSPCC on 0808 800 5000 if you need advice on the appropriate action.

Early help

Any child may benefit from early help, but all staff should be particularly alert to the potential need for early help for a child who:

- is disabled and has specific additional needs;
- has special educational needs (whether or not they have a statutory education, health and care plan);
 - is a young carer;
- is showing signs of being drawn in to anti-social or criminal behaviour, including gang involvement and association with organised crime groups;
- is frequently missing/goes missing from care or from home;
- is misusing drugs or alcohol themselves;
- is at risk of modern slavery, trafficking or exploitation;
- is in a family circumstance presenting challenges for the child, such as substance abuse, adult mental health problems or domestic abuse;
- has returned home to their family from care;
- is showing early signs of abuse and/or neglect;
- is at risk of being radicalised or exploited; • is a privately fostered child.

If early help is appropriate, the DSL will support you in liaising with other agencies and setting up an interagency assessment as appropriate.

The DSL will keep the case under constant review and will consider a referral to local authority children's social care if the situation does not seem to be improving. Timelines of interventions will be monitored and reviewed. **Referral**

If it is appropriate to refer the case to local authority children's social care or the police, the DSL will make the referral or support you to do so.

If you make a referral directly (see section 7.1), you must tell the DSL immediately.

The DSL may seek external advice before making a referral (each school's child protection procedures include details of local sources of advice). However, this should not delay the referral. The DSL makes the referral according to the locally agreed timescales and procedures (details are in each school's child protection procedures). The referral will note all previous intervention by the school with the child, any relevant history relating to the child, their siblings or the family. The DSL shares information with other

relevant professionals, recording reasons for sharing information and ensuring that they are aware of what action the other professionals will take as a result of information shared. The DSL informs parents that they have made a referral, if the parent does not already know, and if there is no reason not to let them know. The local authority may suggest delaying informing the parent in cases of suspected physical or sexual abuse, or where informing the parent might put the child at further risk, to prevent the child being harmed or intimidated (and retracting their disclosure) or in cases of suspected Fabricated or Induced Illness by proxy. The DSL remains in close communication with other professionals around the child/family, in order to share any updates. If a child protection investigation is pursued, the DSL and other key school staff will:

- Work closely and collaboratively with all professionals involved in the investigation, to keep the child safe
- Attend a child protection conference when invited and provide updated information about the child
- Attend any subsequent child protection review conferences.
- Attend core group meetings and take an active role in the implementation of the protection plan

The local authority will make a decision within one working day of a referral about what course of action to take and will let the person who made the referral know the outcome. The DSL or person who made the referral must follow up with the local authority if this information is not made available, and ensure outcomes are properly recorded.

If the child's situation does not seem to be improving after the referral, the DSL or person who made the referral must contact the local authority and make sure the case is reconsidered to ensure the concerns have been addressed and the child's situation improves.

7.5 If you have concerns about extremism

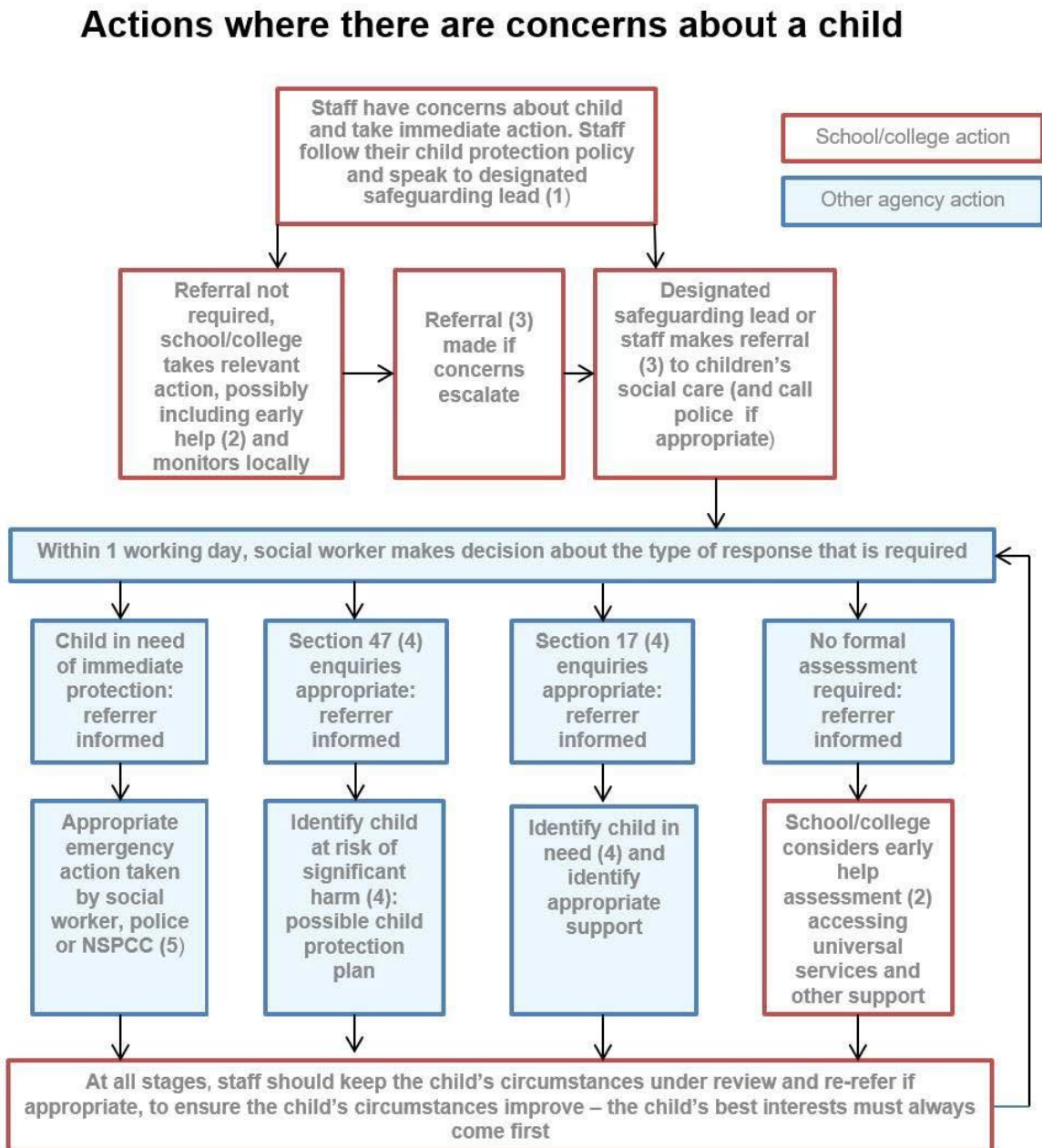
If a child is not at immediate risk of harm, where possible, speak to the DSL first to agree a course of action. Alternatively, make a referral to local authority children's social care directly if appropriate (see 'Referral' above).

Where there is a concern, the DSL will consider the level of risk and decide which agency to make a referral to. This could include [Channel](#), the government's programme for identifying and supporting individuals at risk of being drawn into terrorism, or the local authority children's social care team.

The Department for Education also has a dedicated telephone helpline, 020 7340 7264, that school staff and governors can call to raise concerns about extremism with respect to a pupil. You can also email counter.extremism@education.gov.uk. Note that this is not for use in emergency situations. In an emergency, call 999 or the confidential anti-terrorist hotline on 0800 789 321 if you:

- Think someone is in immediate danger
- Think someone may be planning to travel to join an extremist group
- See or hear something that may be terrorist-related

Figure 1: procedure if you have concerns about a child's welfare (no immediate danger)



(1) In cases which also involve an allegation of abuse against a staff member, see appendix 3 (2) Early help means providing support as soon as a problem emerges at any point in a child's life. Where a child would benefit from co-ordinated early help, an early help inter-agency assessment should be arranged. Chapter one of [Working together to safeguard children](#) provides detailed guidance on the early help process

(3) Referrals should follow the local authority's referral process. See chapter one of [Working together to safeguard children](#)

(4) Under the Children Act 1989, local authorities are required to provide services for children in need for the purposes of safeguarding and promoting their welfare. This can include section 17 assessments of children in need and section 47 assessments of children at risk of significant harm. Full details are in chapter one of [Working together to safeguard children](#)

(5) This could include applying for an Emergency Protection Order (EPO)

7.6 Concerns about a staff member or volunteer

If you have concerns about a member of staff (including supply staff) or volunteer at a school, speak to the headteacher. If you have concerns about the headteacher (or a relative of the headteacher working at the

school), speak to the relevant trust director of education. Details of the headteacher and director of education will be in the school's child protection procedures.

The headteacher/director of education will then follow the procedures set out in appendix 3, if appropriate. Where appropriate, schools with Early Years provision will inform Ofsted of the allegation and actions taken, within the necessary timescale (see appendix 3 for more detail).

If you have concerns about a member of the trust's central team, speak to the chief executive officer. If you have concerns about the chief executive officer, speak to the chair of the board of trustees. They will then follow the procedures set out in appendix 3, if appropriate.

7.7 Allegations of abuse made against other pupils

All staff should be aware that safeguarding issues can manifest themselves via peer on peer abuse. This is most likely to include, but may not be limited to:

- Bullying (including cyberbullying);
- Physical abuse such as hitting, kicking, shaking, biting, hair pulling or otherwise causing physical harm;
- Sexual violence and sexual harassment (see appendix 4 and [Sexual violence and sexual harassment between children in schools and colleges](#));
- 'Upskirting' which is where someone takes a picture under a person's clothing (not necessarily a skirt) without their permission and or knowledge, with the intention of viewing their genitals or buttocks (with or without underwear) to obtain sexual gratification, or cause the victim humiliation, distress or alarm. It is a criminal offence. Anyone of any gender, can be a victim. The Voyeurism (Offences) Act, which is commonly known as the Upskirting Act, came into force on 12 April 2019;
- Sexting (also known as youth produced sexual imagery); and
- Initiation/hazing type violence and rituals

Abuse will never be tolerated or passed off as "banter", "just having a laugh" or "part of growing up".

Most cases of pupils hurting other pupils will be dealt with under the school's behaviour policy, but this safeguarding policy and the school's child protection procedures will apply to any allegations that raise safeguarding concerns. This might include where the alleged behaviour:

- Is serious, and potentially a criminal offence
- Could put pupils at risk
- Involves pupils being forced to use drugs or alcohol
- Involves sexual exploitation or sexual abuse, such as indecent exposure, sexual assault, or sexually inappropriate pictures or videos

If a pupil makes an allegation of abuse against another pupil:

- You must tell the DSL immediately and record the allegation, but do not investigate it
- The DSL will contact the local authority children's social care team and follow its advice, as well as the police if the allegation involves a potential criminal offence
- Whenever sexual violence has occurred or is disclosed the DSL will ensure that both the "victim(s)" and the "perpetrator(s)" are formally referred to children's social care. This will be in addition to reporting the matter to the Police. Sexual violence includes rape, assault by penetration and sexual assault. Children under 10 are below the age of criminal responsibility. Therefore, if they engage in peer on peer abuse it is referred to as harmful sexualised behaviour rather than sexual assault. However, this should not deter schools from taking it seriously and formally referring both the "victim(s)" and the "perpetrators(s)" to children's social care.
- The DSL will record a risk assessment and support and protection plan for all children involved – the victim(s), the child(ren) against whom the allegation has been made and any other child affected – with a named adult they can talk to if needed (the choice of any such adult should be the child's)
- The DSL will contact the children and adolescent mental health services (CAMHS), if appropriate We will minimise the risk of peer-on-peer abuse by:
- Challenging any form of derogatory or sexualised language or behaviour

- Being vigilant to issues that particularly affect different genders – for example, sexualised or aggressive touching or grabbing towards female pupils, and initiation or hazing type violence with respect to boys
- Ensuring our curriculum helps to educate pupils about appropriate behaviour and consent
- Ensuring pupils know they can talk to staff confidentially
- Ensuring staff are trained to understand that a pupil harming a peer could be a sign that the child is being abused themselves, and that this would fall under the scope of this policy

7.8 The use of ‘reasonable force’

There are circumstances where it is appropriate for staff in schools to use reasonable force to safeguard children and young people. The term ‘reasonable force’ covers the broad range of actions used by staff that involve a degree of physical contact to control or restrain children. This can range from guiding a child to safety by the arm, to more extreme circumstances such as breaking up a fight or where a young person needs to be restrained to prevent violence or injury. ‘Reasonable’ in these circumstances means ‘using no more force than is needed.’ The use of force may involve either passive physical contact, such as standing between pupils or blocking a pupil’s path, or active physical contact such as leading a pupil by the arm out of the classroom.

7.9 Contextual safeguarding

All staff should be aware that safeguarding incidents and/or behaviours can be associated with factors outside the school or college and/or can occur between children outside of these environments. All staff, but especially the designated safeguarding lead (and deputies) should consider whether children are at risk of abuse or exploitation in situations outside their families. Extra-familial harms take a variety of different forms and children can be vulnerable to multiple harms including (but not limited to) sexual exploitation, criminal exploitation, and serious youth violence.

7.10 Child Sexual Exploitation (CSE) and Child Criminal Exploitation (CCE)

Both CSE and CCE are forms of abuse and both occur where an individual or group takes advantage of an imbalance in power to coerce, manipulate or deceive a child into sexual or criminal activity. Whilst age may be the most obvious, this power imbalance can also be due to a range of other factors including gender, sexual identity, cognitive ability, physical strength, status, and access to economic or other resources. In some cases, the abuse will be in exchange for something the victim needs or wants and/or will be to the financial benefit or other advantage (such as increased status) of the perpetrator or facilitator. The abuse can be perpetrated by individuals or groups, males or females, and children or adults. The abuse can be a oneoff occurrence or a series of incidents over time, and range from opportunistic to complex organised abuse. It can involve force and/or enticement-based methods of compliance and may, or may not, be accompanied by violence or threats of violence. Victims can be exploited even when activity appears consensual and it should be noted exploitation as well as being physical can be facilitated and/or take place online. More information including definitions and indicators are included in Annex A of Keeping Children Safe in Education (September 2020)

7.11 Serious violence

All staff should be aware of indicators, which may signal that children are at risk from, or are involved with serious violent crime. These may include increased absence from school, a change in friendships or relationships with older individuals or groups, a significant decline in performance, signs of self-harm or a significant change in wellbeing, or signs of assault or unexplained injuries. Unexplained gifts or new possessions could also indicate that children have been approached by, or are involved with, individuals associated with criminal networks or gangs. All staff should be aware of the associated risks and understand the measures in place to manage these. Advice for schools is provided in the Home Office’s [Preventing youth violence and gang involvement](#) and its [Criminal exploitation of children and vulnerable adults: county lines guidance](#)

The DSL will ensure that formal referrals are made to children’s social care for any pupils about whom there are CCE concerns or who are at risk from or involved with serious violent crime.

7.12 Mental health

Schools have an important role to play in supporting the mental health and wellbeing of their pupils. All staff should be aware that mental health problems can, in some cases, be an indicator that a child has suffered or is at risk of suffering abuse, neglect or exploitation.

Only appropriately trained professionals should attempt to make a diagnosis of a mental health problem. Staff however, are well placed to observe children day-to-day and identify those whose behaviour suggests that they may be experiencing a mental health problem or be at risk of developing one.

Where children have suffered abuse and neglect, or other potentially traumatic adverse childhood experiences, this can have a lasting impact throughout childhood, adolescence and into adulthood. It is key that staff are aware of how these children's experiences, can impact on their mental health, behaviour and education.

If staff have a mental health concern about a child that is also a safeguarding concern, immediate action should be taken, following the school's child protection procedures and speaking to the designated safeguarding lead or a deputy.

The Department for Education has published advice and guidance on [Preventing and Tackling Bullying](#), and [Mental Health and Behaviour in Schools](#). In addition, Public Health England has produced a range of resources to support secondary school teachers to promote positive health, wellbeing and resilience among young people including its guidance [Promoting children and young people's emotional health and wellbeing](#). Its resources include social media, forming positive relationships, smoking and alcohol. See [Rise Above](#) for links to all materials and lesson plans.

7.13 Children who need a social worker (Child in Need and Child Protection Plans)

Children may need a social worker due to safeguarding or welfare needs. Children may need this help due to abuse, neglect and complex family circumstances. A child's experiences of adversity and trauma can leave them vulnerable to further harm, as well as educationally disadvantaged in facing barriers to attendance, learning, behaviour and mental health.

Local authorities should share the fact a child has a social worker, and the designated safeguarding lead should hold and use this information so that decisions can be made in the best interests of the child's safety, welfare and educational outcomes. This should be considered as a matter of routine.

Where children need a social worker, this should inform decisions about safeguarding (for example, responding to unauthorised absence or missing education where there are known safeguarding risks) and about promoting welfare (for example, considering the provision of pastoral and/or academic support, alongside action by statutory services).

8. Notifying parents

Where appropriate, we will discuss any concerns about a child with the child's parents. The DSL will normally do this in the event of a suspicion or disclosure.

Other staff will only talk to parents about any such concerns following consultation with the DSL.

If we believe that notifying the parents would increase the risk to the child, we will discuss this with the local authority children's social care team before doing so.

In the case of allegations of abuse made against other children, we will normally notify the parents of all the children involved.

9. Pupils with special educational needs and disabilities

We recognise that pupils with special educational needs (SEN) and disabilities can face additional safeguarding challenges. Additional barriers can exist when recognising abuse and neglect in this group, including:

- Assumptions that indicators of possible abuse such as behaviour, mood and injury relate to the child's disability without further exploration
- Pupils being more prone to peer group isolation than other pupils
- The potential for pupils with SEN and disabilities being disproportionately impacted by behaviours such as bullying, without outwardly showing any signs
- Communication barriers and difficulties in overcoming these barriers

10. Mobile phones and cameras

Staff will not use personal mobile phones and laptops/tablets, or school equipment for personal use, in front of pupils, except in case of emergency.

Whenever possible, images of pupils will be recorded on equipment provided by the trust (e.g. a school camera or iPad). However, if, in exceptional circumstances, personal equipment is used to record these images, staff will be mindful that they must be able to justify images of pupils in their possession. Staff will take care when recording images that pupils are appropriately dressed and are not participating in activities that might bring the individuals or the trust into disrepute. Staff will delete such images, from both the device and any cloud storage, as soon as they have been downloaded to the school's network. Any personal devices used must not be set to automatically upload images to any shared platforms, e.g. Family Sharing. Images of pupils must be downloaded from designated school devices as soon as possible and the images deleted from the device.

We will follow the Data Protection Act 2018 when taking and storing photos and recordings for use in the trust. Please also refer to the trust's combined data protection and freedom of information policy.

11. Complaints and concerns about safeguarding practices

11.1 Complaints against staff

Complaints against staff that are likely to require a child protection investigation will be handled in accordance with our procedures for dealing with allegations of abuse made against staff (see appendix 3).

11.2 Other complaints

Please refer to our complaints policy.

11.3 Whistleblowing

Please refer to our whistleblowing policy.

12. Record-keeping

All safeguarding concerns, discussions, decisions made and the reasons for those decisions, must be recorded. If you are in any doubt about whether to record something, discuss it with the DSL.

Non-confidential records will be easily accessible and available. Confidential information and records will be held securely and only available to those who have a right or professional need to see them.

When a child for whom there is a child protection record leaves one of our schools, the DSL will inform the relevant social worker and send the child protection records to the receiving institution immediately. These will be transferred separately from the main pupil file, by secure transit and confirmation of receipt will be obtained and retained. Receiving schools should ensure key staff such as DSLs and SENCos are aware as required. In addition to the child protection file, the DSL should also consider if it would be appropriate to share any information with the new school or college in advance of a child leaving. For example, information that would allow the new school or college to continue supporting victims of abuse and have that support in place for when the child arrives.

If the name of the receiving institution is not known, the DSL will notify the child's social worker as a matter of urgency as soon as the child leaves or appears to be missing. In these circumstances, the child protection records will remain at the school until the child is known to have registered elsewhere.

If a child leaves one of our schools to be electively home educated (EHE), their child protection records will remain at the school until the child is known to have registered elsewhere. If a child joins one of our schools following a period of EHE, the DSL will contact the DSL at their last known school to establish whether there are any child protection records and request that they be sent to the new school without delay. CPOMS will alert the new school if any previous record exists. However, the previous school has to release the record.

When a child joins one of our schools and records from the previous institution indicate they have a child protection plan, the DSL will notify the local authority children's social care service immediately.

When a child who is known to have child protection records joins one of our schools and no child protection records have been received from the previous school, the DSL will contact the DSL at that institution to request the records be sent immediately. This request will be confirmed in writing and repeated if necessary. If they remain unavailable, the school will inform the Education Welfare Service.

In addition:

- Please refer to our records retention policy
- Appendix 2 sets out our policy on record-keeping specifically with respect to recruitment and preemployment checks
- Appendix 3 sets out our policy on record-keeping with respect to allegations of abuse made against staff

13. Training

The trusts safeguarding/child protection training framework is set out in the following table:

Recruitment: New staff/ volunteers/supply	Induction: New staff/volunteers/supply/governors	Contractors	Safeguarding/child protection training for existing staff/volunteers	Governors	DSLs and deputies/alternates
<p>As part of recruitment all staff and volunteers MUST have safeguarding/child protection training.</p> <p>This MUST be completed before their start date.</p> <p>Accepted training:</p> <p>NSPCC child protection in schools – online course [within the last academic year]</p> <p>Safeguarding/child protection training endorsed by the three local safeguarding partners [within the last academic year]</p>	<p>Safeguarding induction packs containing:</p> <ul style="list-style-type: none"> • KCSIE (September 2020) Part one and Annex A [and Part two for SLT roles] • Code of conduct • Child protection procedures • Behaviour policy • Safeguarding policy <p>will be provided to all new staff and volunteers on their first day.</p> <p>The DSL will explain the child protection procedures within the school and Part one of Keeping Children Safe in Education (September 2020).</p> <p>School will record the induction has been completed and signed off by DSL and new staff/volunteer.</p>	<p>Contractors arriving in school will all receive the school's child protection procedures.</p> <p>This will be signed for by the individual contractor.</p> <p>Before commissioning contractors, a company statement must be gathered confirming all relevant checks have been fully completed, with dates, and the company must provide its safeguarding policy</p>	<p>Staff MUST have safeguarding/child protection training every three years.</p> <p>Acceptable training:</p> <p>NSPCC or training endorsed by the three local safeguarding partners</p> <p>The trust will monitor all staff have been trained on a three year cycle from their start date.</p> <p>In addition, the trust will provide each DSL with annual safeguarding/child protection updates each August, in preparation for the September term. The updates will reflect changes within statutory requirements, locally agreed protocols and current issues.</p> <p>DSLs MUST deliver the updates to all staff/volunteers at their school and keep a register of who attended within the school. The trust will monitor this as part</p>	<p>All governors must access safeguarding/child protection training, that includes online safety, specifically for governors, within the first year of their term of office and every three years after that. A record of this must be kept within the school. This will be monitored by the trust as part of the annual safeguarding review.</p> <p>Trust employees who sit on local governing bodies are not required to undertake further</p>	<p>DSLs and deputies/alternates will complete DSL training (endorsed by the three local safeguarding partners) every two years.</p> <p>DSLs will attend training for trainers as required by the three local safeguarding partners, and multiagency training every three years</p> <p>All DSLs and deputies/alternates will keep themselves up to date with emerging safeguarding issues.</p> <p>Evidence of this will be monitored during the annual safeguarding review.</p>

<p>Staff/volunteers must submit their certificate as evidence of completed training. These details will be recorded within the school and centrally within the trust.</p> <p>Staff and volunteers cannot start until they can evidence they have completed safeguarding/child protection training.</p>		<p>This will be held on file at the school and recorded on the SCR. Details of individuals will be provided by the company and these will be checked on arrival against the information provided.</p>	<p>of the annual safeguarding review.</p> <p>DSLs will provide opportunities for discussion and inhouse safeguarding training within their school. A record of all training/updates and meetings must be kept. The trust will monitor this as part of the annual safeguarding review.</p>	<p>safeguarding training in addition to that received in their work role.</p> <p>It is good practice for governors to complete the Home Office's Prevent awareness elearning.</p>	
<p>Quality assurance and monitoring by the trust.</p> <ul style="list-style-type: none"> All new appointments will be recorded centrally – safeguarding/child protection training will be included as part of the recruitment and selection process. Annual safeguarding/child protection updates will be provided to all DSLs – details of the update will be recorded centrally. <p>Annual safeguarding reviews will include checks that:</p> <ul style="list-style-type: none"> New staff have completed safeguarding/child protection training Induction packs have been issued and receipted for all new appointments DSL training is in line with current guidelines, including evidence of updates Governors are trained and kept up to date Every interview panel contains at least one person with current safer recruitment training 			<p>Quality assurance and monitoring by the school.</p> <ul style="list-style-type: none"> Record all new staff on the Single Central Record and check that a safeguarding/child protection training certificate has been provided Record that all new staff have signed to accept the induction information Keep a record of all those who attended the annual safeguarding/child protection update – with evidence of how the information will be disseminated to those who could not access the update. Record details of all internal safeguarding/child protection updates, safeguarding/child protection discussions in team meetings and inhouse training. These records will be sampled as part of the trust's annual safeguarding review Produce termly safeguarding reports for the local governing body, including details of safeguarding/child protection training and share these with the trust 		

14. Monitoring arrangements

This policy will be reviewed **annually** by the trust lead on safeguarding. At every review, it will be approved by the chief executive officer in consultation with headteachers.

15. Links with other policies

This policy links to the following trust policies and procedures:

- Safer recruitment and selection
- Staff and person in a position of trust code of conduct
- Complaints
- Whistleblowing
- Data Protection and Freedom of Information
- Health and safety
- Acceptable use of ICT

It also links to the following school policies and procedures:

- Child protection
- Behaviour
- Attendance
- Relationships Education (primary)/Relationships and Sex Education (secondary)
- Health Education
- First aid
- Curriculum
- Supporting pupils with medical conditions
- Special educational needs and disabilities
- Educational visits

These appendices are based on the Department for Education's statutory guidance, Keeping Children Safe in Education (September 2020).

Appendix 1: types of abuse

Abuse, including neglect, and safeguarding issues are rarely standalone events that can be covered by one definition or label. In most cases, multiple issues will overlap.

Physical abuse may involve hitting, shaking, throwing, poisoning, burning or scalding, drowning, suffocating or otherwise causing physical harm to a child. Physical harm may also be caused when a parent or carer fabricates the symptoms of, or deliberately induces, illness in a child.

Emotional abuse is the persistent emotional maltreatment of a child such as to cause severe and adverse effects on the child's emotional development. Some level of emotional abuse is involved in all types of maltreatment of a child, although it may occur alone. Emotional abuse may involve:

- Conveying to a child that they are worthless or unloved, inadequate, or valued only insofar as they meet the needs of another person
- Not giving the child opportunities to express their views, deliberately silencing them or 'making fun' of what they say or how they communicate
- Age or developmentally inappropriate expectations being imposed on children. These may include interactions that are beyond a child's developmental capability, as well as overprotection and limitation of exploration and learning, or preventing the child participating in normal social interaction
- Seeing or hearing the ill-treatment of another

- Serious bullying (including cyberbullying), causing children frequently to feel frightened or in danger, or the exploitation or corruption of children

Sexual abuse involves forcing or enticing a child or young person to take part in sexual activities, not necessarily involving a high level of violence, whether or not the child is aware of what is happening. The activities may involve:

- Physical contact, including assault by penetration (for example rape or oral sex) or non-penetrative acts such as masturbation, kissing, rubbing and touching outside of clothing
- Non-contact activities, such as involving children in looking at, or in the production of, sexual images, watching sexual activities, encouraging children to behave in sexually inappropriate ways, or grooming a child in preparation for abuse (including via the internet)

Sexual abuse is not solely perpetrated by adult males. Women can also commit acts of sexual abuse, as can other children.

Neglect is the persistent failure to meet a child's basic physical and/or psychological needs, likely to result in the serious impairment of the child's health or development. Neglect may occur during pregnancy as a result of maternal substance abuse.

Once a child is born, neglect may involve a parent or carer failing to:

- Provide adequate food, clothing and shelter (including exclusion from home or abandonment)
- Protect a child from physical and emotional harm or danger
- Ensure adequate supervision (including the use of inadequate care-givers)
- Ensure access to appropriate medical care or treatment

It may also include neglect of, or unresponsiveness to, a child's basic emotional needs.

Appendix 2: safer recruitment and DBS checks – policy and procedures

We will record all information on the checks carried out in a single central record (SCR). Schools maintain an SCR of their staff and the trust maintains an SCR of central staff. Copies of the checks, where appropriate, will be held in individuals' personnel files. We follow requirements and best practice in retaining copies of these checks, as set out below. **Appointing new staff**

When appointing new staff, we will:

- Verify their identity
- Obtain (via the applicant) an enhanced Disclosure and Barring Service (DBS) certificate, including barred list information for those who will be engaging in regulated activity (see definition below).
- Obtain a separate barred list check if they will start work in regulated activity before the DBS certificate is available
- Verify their mental and physical fitness to carry out their work responsibilities
- Verify their right to work in the UK. We will keep a copy of this verification for the duration of the member of staff's employment and for 2 years afterwards
- Verify their professional qualifications, as appropriate
- Ensure they are not subject to a prohibition order if they are employed to undertake teaching work
- Carry out further additional checks, as appropriate, on candidates who have lived or worked outside of the UK, including (where relevant) any teacher sanctions or restrictions imposed by a European Economic Area professional regulating authority, and criminal records checks or their equivalent
- Check that candidates taking up a management position are not subject to a prohibition from management (section 128) direction made by the secretary of state
- Ask for written information about previous employment history and check that information is not contradictory or incomplete
- Seek references on all short-listed candidates, including internal candidates, before interview. We will scrutinise these and resolve any concerns before confirming appointments. References should always be obtained from the candidate's current employer. Where a candidate is not currently

employed, verification of their most recent period of employment and reasons for leaving should be obtained from the organisation at which they were employed.

- Ensure that appropriate checks are carried out to ensure that relevant individuals are not disqualified under the Childcare (Disqualification) and Childcare (Early Years Provision Free of Charge) (Extended Entitlement) (Amendment) Regulations 2018 and Childcare Act 2006.

Regulated activity means a person who will be:

- Responsible, on a regular basis in a school or college, for teaching, training, instructing, caring for or supervising children
- Carrying out paid, or unsupervised unpaid, work regularly in a school or college where that work provides an opportunity for contact with children
- Engaging in intimate or personal care or overnight activity, even if this happens only once and regardless of whether they are supervised or not

Existing staff

If we have concerns about an existing member of staff's suitability to work with children, we will carry out all the relevant checks as if the individual was a new member of staff. We will also do this if an individual moves from a post that is not regulated activity to one that is.

We will refer to the DBS anyone who has harmed, or poses a risk of harm, to a child or vulnerable adult:

- Where the 'harm test' is satisfied in respect of the individual (i.e. that no action or inaction occurred but the present risk that it could was significant)
- Where the individual has received a caution or conviction for a relevant offence
- If there is reason to believe that the individual has committed a listed relevant offence, under the [Safeguarding Vulnerable Groups Act 2006 \(Prescribed Criteria and Miscellaneous Provisions\) Regulations 2009](#)
- If the individual has been removed from working in regulated activity (paid or unpaid) or would have been removed if they had not left

Agency and third-party staff

We will obtain written notification from any agency or third-party organisation that it has carried out the necessary safer recruitment checks that we would otherwise perform. We will also check that the person presenting themselves for work is the same person on whom the checks have been made.

Contractors

We will ensure that any contractor, or any employee of the contractor, who is to work at a trust school has had the appropriate level of DBS check. This will be:

- An enhanced DBS check with barred list information for contractors engaging in regulated activity
- An enhanced DBS check, not including barred list information, for all other contractors who are not in regulated activity but whose work provides them with an opportunity for regular contact with children

We will obtain the DBS check for self-employed contractors.

Contractors who have not had any checks will not be allowed to work unsupervised or engage in regulated activity under any circumstances.

We will check the identity of all contractors and their staff on arrival at the school. **Trainee/student teachers**

Where applicants for initial teacher training are salaried by us, we will ensure that all necessary checks are carried out.

Where trainee teachers are fee-funded, we will obtain written confirmation from the training provider that necessary checks have been carried out and that the trainee has been judged by the provider to be suitable to work with children.

In both cases, this includes checks to ensure that relevant individuals are not disqualified under the Childcare (Disqualification) and Childcare (Early Years Provision Free of Charge) (Extended Entitlement) Regulations 2018 and Childcare Act 2006.

Volunteers

We will:

- Never leave an unchecked volunteer unsupervised or allow them to work in regulated activity
- Obtain an enhanced DBS check with barred list information for all volunteers who are working in regulated activity
- Obtain an enhanced DBS check without barred list information for all volunteers who are not in regulated activity, but who have an opportunity to come into contact with children on a regular basis, for example, supervised volunteers
- Record a risk assessment when deciding whether to seek an enhanced DBS check for any volunteers not engaging in regulated activity
- Ensure that appropriate checks are carried out to ensure that relevant individuals are not disqualified under the Childcare (Disqualification) and Childcare (Early Years Provision Free of Charge) (Extended Entitlement) (Amendment) Regulations 2018 and Childcare Act 2006.

Governors

All trustees and local governors will have an enhanced DBS check without barred list information. They will have an enhanced DBS check with barred list information if working in regulated activity.

The chair of the board of trustees will have their DBS check countersigned by the secretary of state. All trustees and local governors will have the following checks:

- Section 128 direction
- Other checks deemed necessary if they have lived or worked outside the UK

Alternative Provision

Where a trust school places a pupil with an alternative provider, the school continues to be responsible for the safeguarding of that pupil, and will satisfy itself that the provider meets the needs of the pupil. The school should obtain written confirmation from the alternative provider that appropriate safeguarding checks have been carried out on individuals working at the establishment, i.e. those checks that we would otherwise perform in respect of our own staff.

Adults who supervise pupils on work experience

When organising work experience, we will ensure that policies and procedures are in place to protect children from harm.

We will also consider whether it is necessary for barred list checks to be carried out on the individuals who supervise a pupil under 16 on work experience. This will depend on the specific circumstances of the work experience, including the nature of the supervision, the frequency of the activity being supervised, and whether the work is regulated activity.

Pupils staying with host families (homestay)

Where a trust school makes arrangements for pupils to be provided with care and accommodation by a host family to which they are not related (for example, during a foreign exchange visit), we will request enhanced DBS checks with barred list information on those people.

Pupils should understand who to contact during a homestay should an emergency occur or a situation arise which makes them feel uncomfortable.

Where a period of UK homestay lasts 28 days or more, for a child aged under 16 years of age (under 18 years of age if the child has disabilities), this may amount to private fostering (see below).

Where a trust school is organising such hosting arrangements overseas and host families cannot be checked in the same way, we will work with our partner schools abroad to ensure that similar assurances are undertaken prior to the visit. **Private fostering**

Private fostering occurs when a child under the age of 16 (under 18, if disabled) is provided with care and accommodation by a person who is not a parent, person with parental responsibility for them or a relative, in their own home. A child is not privately fostered if the person caring for and accommodating them has done so for less than 28 days and does not intend to do so for longer. Such arrangements may come to the attention of school staff through the normal course of their interaction, and promotion of learning activities, with children. School staff should notify the DSL as soon as they become aware of private fostering arrangements. The school will then notify the local authority to allow the local authority to check the arrangement is suitable and safe for the child. A link to comprehensive guidance on the circumstances in which private fostering may arise can be found at Annex A of Keeping Children Safe in Education (September 2020).

Appendix 3: allegations of abuse made against staff

This section of this policy applies to all cases in which it is alleged that a current member of staff or volunteer has:

- Behaved in a way that has harmed a child, or may have harmed a child, or
- Possibly committed a criminal offence against or related to a child, or
- Behaved towards a child or children in a way that indicates he or she may pose a risk of harm to children, or
- Behaved or may have behaved in a way that indicates they may not be suitable to work with children.

It applies regardless of whether the alleged abuse took place in a school. Where an allegation might meet the harm threshold, above, we will follow the guidance in Part four of Keeping Children Safe in Education. Allegations against a teacher who is no longer teaching and historical allegations of abuse will be referred to the police.

We will deal with any allegation of abuse against a member of staff or volunteer very quickly, in a fair and consistent way that provides effective child protection while also supporting the individual who is the subject of the allegation.

Our procedures for dealing with allegations will be applied with common sense and judgement.

Supply teachers

In some circumstances schools will have to consider an allegation against an individual not directly employed by them, where its disciplinary procedures do not fully apply, for example, supply teachers provided by an employment agency.

Whilst schools are not the employer of supply teachers, they should ensure allegations are dealt with properly. In no circumstances should a school decide to cease to use a supply teacher due to safeguarding concerns, without finding out the facts and liaising with the local authority designated officer (LADO) to determine a suitable outcome. We will discuss with the agency whether it is appropriate to suspend the supply teacher, or redeploy them to another part of the school, whilst an investigation is carried out.

Agencies should be fully involved and co-operate in any enquiries from the LADO, police and/or children's social services. The school will usually take the lead because agencies do not have direct access to children or other school staff, so they will not be able to collect the facts when an allegation is made, nor do they have all the relevant information required by the LADO as part of the referral process. Supply teachers, whilst not employed by the school, are under their supervision, direction and control when working in the school. They should be advised to contact their trade union representative if they have one, or a colleague for support. The allegations management meeting which is often arranged by the LADO should address issues such as information sharing, to ensure that any previous concerns or allegations known to the agency are taken into account by the school during the investigation.

When using an agency, schools should inform the agency of its process for managing allegations. This should include inviting the agency's human resource manager or equivalent to meetings and keeping them up to date with information about policies.

Suspension

Suspension will not be the default position, and will only be considered in cases where there is reason to suspect that a child or other children is/are at risk of harm, or the case is so serious that it might be grounds for dismissal. In such cases, we will only suspend an individual if we have considered all other options available and there is no reasonable alternative.

Based on an assessment of risk, we will consider alternatives such as:

- Redeployment within the school so that the individual does not have direct contact with the child or children concerned
- Providing an assistant to be present when the individual has contact with children
- Redeploying the individual to alternative work in the school so that they do not have unsupervised access to children
- Moving the child or children to classes where they will not come into contact with the individual, making it clear that this is not a punishment and parents have been consulted
- Temporarily redeploying the individual to another role in a different location, for example to an alternative school or other work for the trust

Definitions for outcomes of allegation investigations

- **Substantiated:** there is sufficient evidence to prove the allegation

- **Malicious:** there is sufficient evidence to disprove the allegation and there has been a deliberate act to deceive
- **False:** there is sufficient evidence to disprove the allegation
- **Unsubstantiated:** there is insufficient evidence to either prove or disprove the allegation (this does not imply guilt or innocence)
- **Unfounded:** to reflect cases where there is no evidence or proper basis which supports the allegation being made

Procedure for dealing with allegations

In the event of an allegation that meets the criteria above, the headteacher/chief executive officer (or relevant trust director of education/chair of the board of trustees where the headteacher/chief executive officer is the subject of the allegation) – the ‘case manager’ – will take the following steps:

- Immediately discuss the allegation with the designated officer at the local authority (contact information is provided in a table at the end of this appendix). This is to consider the nature, content and context of the allegation and agree a course of action, including whether further enquiries are necessary to enable a decision on how to proceed, and whether it is necessary to involve the police and/or children’s social care services. (The case manager may, on occasion, consider it necessary to involve the police *before* consulting the designated officer – for example, if the accused individual is deemed to be an immediate risk to children or there is evidence of a possible criminal offence. In such cases, the case manager will notify the designated officer as soon as practicably possible after contacting the police)
- Inform the accused individual of the concerns or allegations and likely course of action as soon as possible after speaking to the designated officer (and the police or children’s social care services, where necessary). Where the police and/or children’s social care services are involved, the case manager will only share such information with the individual as has been agreed with those agencies
- Where appropriate (in the circumstances described above), carefully consider whether suspension of the individual from contact with children at the school is justified or whether alternative arrangements such as those outlined above can be put in place. Advice will be sought from the designated officer, police and/or children’s social care services, as appropriate
- **If immediate suspension is considered necessary**, agree and record the rationale for this with the designated officer. The record will include information about the alternatives to suspension that have been considered, and why they were rejected. Written confirmation of the suspension will be provided to the individual facing the allegation or concern within 1 working day, and the individual will be given a named contact at the trust and their contact details
- **If it is decided that no further action is to be taken** in regard to the subject of the allegation or concern, record this decision and the justification for it and agree with the designated officer what information should be put in writing to the individual and by whom, as well as what action should follow both in respect of the individual and those who made the initial allegation
- **If it is decided that further action is needed**, take steps as agreed with the designated officer to initiate the appropriate action in school and/or liaise with the police and/or children’s social care services as appropriate
- Provide effective support for the individual facing the allegation or concern, including appointing a named representative to keep them informed of the progress of the case and consider what other support is appropriate. The individual facing the allegation may wish to call the Education Support Partnership, free on 08000 562 561 or visit their website at www.educationsupportpartnership.org.uk
- Inform the parents or carers of the child/children involved about the allegation as soon as possible if they do not already know (following agreement with children’s social care services and/or the police, if applicable). The case manager will also inform the parents or carers of the requirement to maintain confidentiality about any allegations made against teachers (where this applies) while investigations are ongoing. Any parent or carer who wishes to have the confidentiality restrictions removed in respect of a teacher will be advised to seek legal advice

-
- Keep the parents or carers of the child/children involved informed of the progress of the case and the outcome, where there is not a criminal prosecution, including the outcome of any disciplinary process (in confidence)
- Make a referral to the DBS where it is thought that the individual facing the allegation or concern has engaged in conduct that harmed or is likely to harm a child, or if the individual otherwise poses a risk of harm to a child
Inform the trust lead on safeguarding (swatts@unitysp.co.uk) that you have made a referral to the designated officer at the local authority, providing the following information:
 - Date of referral
 - First name (of the person referred) ○ Surname (of the person referred) ○ Post (of the person referred) ○ School
 - Name of the person making the referral
 - Role of the person making the referral (this should be the Head or Director of Education if the allegation is about the Head) ○ Reason(s) for the referral

Schools with Early Years provision will inform Ofsted of any allegations of serious harm or abuse by any person living, working, or looking after children at the premises (whether the allegations relate to harm or abuse committed on the premises or elsewhere), and any action taken in respect of the allegations. This notification will be made as soon as reasonably possible and always within 14 days of the allegations being made.

If the trust is made aware that the secretary of state has made an interim prohibition order in respect of an individual, we will immediately suspend that individual from teaching, pending the findings of the investigation by the Teaching Regulation Agency (TRA).

Where the police are involved, wherever possible the trust will ask the police at the start of the investigation to obtain consent from the individuals involved to share their statements and evidence for use in the trust's disciplinary process, should this be required at a later point.

Timescales

- Any cases where it is clear immediately that the allegation is unsubstantiated or malicious will be resolved within 1 week
- If the nature of an allegation does not require formal disciplinary action, we will instigate appropriate action within 3 working days
- If a disciplinary hearing is required and can be held without further investigation, we will hold this within 15 working days

Specific actions

Action following a criminal investigation or prosecution

The case manager will discuss with the local authority's designated officer (LADO) whether any further action, including disciplinary action, is appropriate and, if so, how to proceed, taking into account information provided by the police and/or children's social care services. **Conclusion of a case where the allegation is substantiated**

If the allegation is substantiated and the individual is dismissed or the trust ceases to use their services, or the individual resigns or otherwise ceases to provide their services, the case manager and the trust's Head of HR will discuss with the designated officer whether to make a referral to the DBS for consideration of whether inclusion on the barred lists is required.

If the individual concerned is a member of teaching staff, the case manager and the trust's Head of HR will discuss with the designated officer whether to refer the matter to the Teaching Regulation Agency (TRA) to consider prohibiting the individual from teaching. **Individuals returning to work after suspension**

If it is decided on the conclusion of a case that an individual who has been suspended can return to work, the case manager will consider how best to facilitate this.

The case manager will also consider how best to manage the individual's contact with the child or children who made the allegation, if they are still attending the school. **Malicious allegations**

If an allegation is shown to be deliberately invented, or malicious, the headteacher, or other appropriate person in the case of an allegation against the headteacher, will consider whether any disciplinary action is appropriate against the pupil(s) who made it, or whether the police should be asked to consider whether action against those who made the allegation might be appropriate, even if they are not a pupil.

Confidentiality

The trust will make every effort to maintain confidentiality and guard against unwanted publicity while an allegation is being investigated or considered.

The case manager will take advice from the local authority's designated officer (LADO), police and children's social care services, as appropriate, to agree:

Who needs to know about the allegation and what information can be shared

- How to manage speculation, leaks and gossip, including how to make parents or carers of a child/children involved aware of their obligations with respect to confidentiality
- What, if any, information can be reasonably given to the wider community to reduce speculation •

How to manage press interest if, and when, it arises

Record-keeping

The case manager will maintain clear records about any case where the allegation or concern meets the criteria above and store them on the individual's confidential personnel file for the duration of the case. Such records will include:

- A clear and comprehensive summary of the allegation
- Details of how the allegation was followed up and resolved
- Notes of any action taken and decisions reached (and justification for these, as stated above)

If an allegation or concern is not found to have been malicious, the trust will retain the records of the case on the individual's confidential personnel file, and provide a copy to the individual. We will retain these records at least until the individual has reached normal pension age, or for 10 years from the date of the allegation if that is longer.

The records of any allegation that is found to be malicious will be deleted from the individual's personnel file.

References

When providing employer references, we will not refer to any allegation that has been proven to be false, unsubstantiated, malicious or unfounded, or any history of allegations where all such allegations have been proven to be false, unsubstantiated, malicious or unfounded.

Learning lessons

After any cases where the allegations are *substantiated*, we will review the circumstances of the case with the local authority's designated officer (LADO) to determine whether there are any improvements that we can make to the trust's procedures or practice to help prevent similar events in the future. This will include consideration of (as applicable):

- Issues arising from the decision to suspend the member of staff
- The duration of the suspension
- Whether or not the suspension was justified
- The use of suspension when the individual is subsequently reinstated. We will consider how future investigations of a similar nature could be carried out without suspending the individual

contact information

Local Authority	LADO telephone number	LADO email
Cambridgeshire	01223 727 967 (Monday to Friday during office opening hours) 01733 234 724 (Emergency Duty Team - out of hours queries)	lado@cambridgeshire.gov.uk
Essex	0333 013 9797	Childrens.safeguarding@essex.gov.uk
Havering	01708 431 653	lado@haverling.gov.uk
Suffolk	0300 123 2044	lado@suffolk.gov.uk

Appendix 4: specific safeguarding issues

Children missing from education

A child going missing from education is a potential indicator of abuse or neglect, and such children are at risk of being victims of harm, including sexual abuse or exploitation, child criminal exploitation or radicalisation. Where reasonably possible, our schools will hold more than one emergency contact number for each pupil. This goes beyond the legal minimum and is good practice to give us additional options to make contact with a responsible adult when a child missing education is also identified as a welfare and/or safeguarding concern.

There are many circumstances where a child may become missing from education, but some children are particularly at risk. These include children who:

- Are at risk of harm or neglect
- Come from Gypsy, Roma, or Traveller families
- Come from the families of service personnel
- Go missing or run away from home or care
- Are supervised by the youth justice system
- Cease to attend a school
- Come from new migrant families

We will follow our procedures for unauthorised absence and for dealing with children who go missing from education, particularly on repeat occasions, to help identify the risk of abuse and neglect, including sexual exploitation, and to help prevent the risks of going missing in future. This includes informing the local authority if a child leaves the school without a new school being named, and adhering to requirements with respect to sharing information with the local authority, when applicable, when removing a child's name from the admission register at non-standard transition points.

Staff will be trained in signs to look out for and the individual triggers to be aware of when considering the risks of potential safeguarding concerns which may be related to being missing, such as mental health problems, substance abuse, travelling to conflict zones, FGM and forced marriage.

If a staff member suspects that a child is suffering from harm or neglect, we will follow local child protection procedures, including with respect to making reasonable enquiries. We will make an immediate referral to the local authority children's social care team, and the police, if the child is in immediate danger or at risk of harm.

Children with family members in prison

Children with family members in prison are at risk of poor outcomes including poverty, stigma, isolation and poor mental health. The National Information Centre on Children of Offenders ([NICCO](#)) provides information designed to support professionals working with offenders and their children, to help mitigate the negative consequences for those children.

Staff will inform the DSL if they know a pupil has a family member in prison so that the DSL can ensure appropriate support is in place.

Child Criminal exploitation (CCE)

CCE is where an individual or group takes advantage of an imbalance of power to coerce, control, manipulate or deceive a child into any criminal activity (a) in exchange for something the victim needs or wants, and/or (b) for the financial or other advantage of the perpetrator or facilitator and/or (c) through violence or the threat of violence. The victim may have been criminally exploited even if the activity appears consensual. CCE does not always involve physical contact; it can also occur through the use of technology. CCE can include children being forced to work in cannabis factories, being coerced into moving drugs or money across the country (county lines, see below for more information), forced to shoplift or pickpocket, or to threaten other young people.

Some of the following can be indicators of CCE:

- children who appear with unexplained gifts or new possessions;
- children who associate with other young people involved in exploitation;
- children who suffer from changes in emotional well-being;
- children who misuse drugs and alcohol;
- children who go missing for periods of time or regularly come home late; and • children who regularly miss school or education or do not take part in education.

Child Sexual Exploitation (CSE)

CSE occurs where an individual or group takes advantage of an imbalance of power to coerce, manipulate or deceive a child into sexual activity (a) in exchange for something the victim needs or wants, and/or (b) for the financial advantage or increased status of the perpetrator or facilitator. The victim may have been sexually exploited even if the sexual activity appears consensual. CSE does not always involve physical contact; it can also occur through the use of technology. CSE can affect any child or young person (male or female) under the age of 18 years, including 16 and 17 year olds who can legally consent to have sex. It can include both contact (penetrative and non-penetrative acts) and non-contact sexual activity and may occur without the child or young person's immediate knowledge (e.g. through others copying videos or images they have created and posted on social media).

The above CCE indicators can also be indicators of CSE, as can:

- children who have older boyfriends or girlfriends; and
- children who suffer from sexually transmitted infections or become pregnant.

For more information see the Department for Education's [Child sexual exploitation: guide for practitioners](#)

County Lines

County lines is a term used to describe gangs and organised criminal networks involved in exporting illegal drugs (primarily crack cocaine and heroin) into one or more importing areas [within the UK], using dedicated mobile phone lines or other form of "deal line".

Exploitation is an integral part of the county lines offending model with children and vulnerable adults exploited to move [and store] drugs and money. Offenders will often use coercion, intimidation, violence (including sexual violence) and weapons to ensure compliance of victims. Children can be targeted and recruited into county lines in a number of locations including schools, further and higher educational institutions, pupil referral units, special educational needs schools, children's homes and care homes. Children are often recruited to move drugs and money between locations and are known to be exposed to techniques such as 'plugging', where drugs are concealed internally to avoid detection. Children can easily become trapped by this type of exploitation as county lines gangs create drug debts and can threaten serious violence and kidnap towards victims (and their families) if they attempt to leave the county lines network.

One of the ways of identifying potential involvement in county lines are missing episodes (both from home and school), when the victim may have been trafficked for the purpose of transporting drugs and a referral to the [National Referral Mechanism](#) should be considered. If a child is suspected to be at risk of or involved in county lines, a safeguarding referral should be considered alongside consideration of availability of local services/third sector providers who offer support to victims of county lines exploitation.

Further information on the signs of a child's involvement in county lines is available in guidance published by the [Home Office](#).

Domestic abuse

The cross-government definition of domestic violence and abuse is:

Any incident or pattern of incidents of controlling, coercive, threatening behaviour, violence or abuse between those aged 16 or over who are, or have been, intimate partners or family members regardless of gender or sexuality. The abuse can encompass, but is not limited to:

- psychological;
- physical;
- sexual;
- financial; and
- emotional

All children can witness and be adversely affected by domestic abuse in the context of their home life where domestic abuse occurs between family members. Exposure to domestic abuse and/or violence can have a serious, long lasting emotional and psychological impact on children. In some cases, a child may blame themselves for the abuse or may have had to leave the family home as a result. Domestic abuse affecting young people can also occur within their personal relationships, as well as in the context of their home life. Refuge runs the National Domestic Abuse Helpline, which can be called free of charge and in confidence, 24 hours a day on 0808 2000 247. Its website provides guidance and support for potential victims, as well as those who are worried about friends and loved ones. It also has a form through which a safe time from the team for a call can be booked.

Additional advice on identifying children who are affected by domestic abuse and how they can be helped is available at:

- [NSPCC - UK domestic-abuse Signs Symptoms Effects](#)
- [Refuge what is domestic violence/effects of domestic violence on children](#)
- [SafeLives: young people and domestic abuse](#)

If a member of staff suspects that a pupil is experiencing or being exposed to domestic abuse, they will discuss this with the DSL. The DSL will trigger the local safeguarding procedures, including a referral to the local authority's children's social care team and the police, if appropriate.

Homelessness

Being homeless or being at risk of becoming homeless presents a real risk to a child's welfare. The DSL should be aware of contact details and referral routes into the Local Housing Authority so they can raise/progress concerns at the earliest opportunity. Indicators that a family may be at risk of homelessness include household debt, rent arrears, domestic abuse and anti-social behaviour, as well as the family being asked to leave a property. Whilst referrals and or discussion with the Local Housing Authority should be progressed as appropriate, this does not, and should not, replace a referral into children's social care where a child has been harmed or is at risk of harm.

In most cases school staff will be considering homelessness in the context of children who live with their families, and intervention will be on that basis. However, it should also be recognised in some cases 16 and 17 year olds could be living independently from their parents or guardians, for example through their exclusion from the family home, and will require a different level of intervention and support. Children's services will be the lead agency for these young people and the DSL should ensure appropriate referrals are made based on the child's circumstances.

So-called 'honour-based' abuse (HBA) (including Female Genital Mutilation and Forced Marriage)

So-called 'honour-based' abuse (HBA) encompasses incidents or crimes which have been committed to protect or defend the honour of the family and/or the community, including female genital mutilation (FGM), forced marriage, and practices such as breast ironing. Abuse committed in the context of preserving "honour" often involves a wider network of family or community pressure and can include multiple perpetrators. It is important to be aware of this dynamic and additional risk factors when deciding what form of safeguarding action to take. All forms of HBA are abuse (regardless of the motivation) and should be handled and escalated as such. Professionals in all agencies, and individuals and groups in relevant communities, need to be alert to the possibility of a child being at risk of HBA, or already having suffered HBA.

If staff have a concern regarding a child that might be at risk of HBA or who has suffered from HBA, they should speak to the DSL. As appropriate, the DSL will activate local safeguarding procedures, using existing national and local protocols for multiagency liaison with police and children's social care.

FGM

The DSL will make sure that staff have access to appropriate training to equip them to be alert to children affected by FGM or at risk of FGM.

Section 7.3 of this policy sets out the procedures to be followed if a staff member discovers that an act of FGM appears to have been carried out or suspects that a pupil is at risk of FGM. Indicators that FGM has already occurred include:

- A pupil confiding in a professional that FGM has taken place
- A mother/family member disclosing that FGM has been carried out
- A family/pupil already being known to social services in relation to other safeguarding issues
- A girl:
 - Having difficulty walking, sitting or standing, or looking uncomfortable
 - Finding it hard to sit still for long periods of time (where this was not a problem previously) ○ Spending longer than normal in the bathroom or toilet due to difficulties urinating ○ Having frequent urinary, menstrual or stomach problems ○ Avoiding physical exercise or missing PE
 - Being repeatedly absent from school, or absent for a prolonged period
 - Demonstrating increased emotional and psychological needs – for example, withdrawal or depression, or significant change in behaviour
 - Being reluctant to undergo any medical examinations ○ Asking for help, but not being explicit about the problem ○ Talking about pain or discomfort between her legs Potential signs that a pupil may be at risk of FGM include:

- The girl's family having a history of practising FGM (this is the biggest risk factor to consider)
- FGM being known to be practised in the girl's community or country of origin
- A parent or family member expressing concern that FGM may be carried out
- A family not engaging with professionals (health, education or other) or already being known to social care in relation to other safeguarding issues
- A girl:
 - Having a mother, older sibling or cousin who has undergone FGM ○ Having a limited level of integration within UK society
 - Confiding to a professional that she is to have a "special procedure" or to attend a special occasion to "become a woman"
 - Talking about a long holiday to her country of origin or another country where the practice is prevalent, or parents stating that they or a relative will take the girl out of the country for a prolonged period
 - Requesting help from a teacher or another adult because she is aware or suspects that she is at immediate risk of FGM
 - Talking about FGM in conversation – for example, a girl may tell other children about it (although it is important to take into account the context of the discussion) ○ Being unexpectedly absent from school
 - Having sections missing from her 'red book' (child health record) and/or attending a travel clinic or equivalent for vaccinations/anti-malarial medication

The above indicators and risk factors are not intended to be exhaustive.

Forced marriage

Forcing a person into marriage is a crime. A forced marriage is one entered into without the full and free consent of one or both parties and where violence, threats, or any other form of coercion is used to cause a person to enter into a marriage. Threats can be physical or emotional and psychological.

Staff will receive training around forced marriage and the presenting symptoms. We are aware of the 'one chance' rule, i.e. we may only have one chance to speak to the potential victim and only one chance to save them.

If a member of staff suspects that a pupil is being forced into marriage, they will speak to the pupil about their concerns in a secure and private place. They will then report this to the DSL. The DSL will:

- Speak to the pupil about the concerns in a secure and private place
- Activate the local safeguarding procedures and refer the case to the local authority's designated officer (LADO)
- Seek advice from the Forced Marriage Unit on 020 7008 0151 or fm@fco.gov.uk
- Refer the pupil to an education welfare officer, pastoral tutor, learning mentor, or school counsellor, as appropriate

Preventing radicalisation

Children are vulnerable to extremist ideology and radicalisation. Similar to protecting children from other forms of harms and abuse, protecting children from this risk should be a part of a school's safeguarding approach.

- **Extremism** is the vocal or active opposition to our fundamental values, including democracy, the rule of law, individual liberty and the mutual respect and tolerance of different faiths and beliefs. This also includes calling for the death of members of the armed forces.
- **Radicalisation** refers to the process by which a person comes to support terrorism and extremist ideologies associated with terrorist groups.
- **Terrorism** is an action that endangers or causes serious violence to a person/people; causes serious damage to property; or seriously interferes with or disrupts an electronic system. The use or threat must be designed to influence the government or to intimidate the public and is made for the purpose of advancing a political, religious or ideological cause.

There is no single way of identifying whether a child is likely to be susceptible to an extremist ideology.

Background factors combined with specific influences such as family and friends may contribute to a child's

vulnerability. Similarly, radicalisation can occur through many different methods (such as social media or the internet) and settings (such as within the home).

However, it is possible to protect vulnerable people from extremist ideology and intervene to prevent those at risk of radicalisation being radicalised. As with other safeguarding risks, staff should be alert to changes in children's behaviour, which could indicate that they may be in need of help or protection. Staff should use their judgement in identifying children who might be at risk of radicalisation and act proportionately (see section 7.5 above) which may include the designated safeguarding lead (or deputy) making a Prevent referral.

The school's designated safeguarding lead (and any deputies) should be aware of local procedures for making a Prevent referral.

All schools and colleges are subject to a duty under section 26 of the Counter-Terrorism and Security Act 2015 (the CTSA 2015), in the exercise of their functions, to have "due regard to the need to prevent people from being drawn into terrorism". This duty is known as the Prevent duty.

The Prevent duty is part of schools' wider safeguarding obligations. Designated safeguarding leads and other senior leaders should familiarise themselves with the revised [Prevent duty guidance: for England and Wales](#), especially paragraphs 57-76, which are specifically concerned with schools (and also cover childcare).

Channel is a voluntary, confidential support programme which focuses on providing support at an early stage to people who are identified as being vulnerable to being drawn into terrorism. Prevent referrals may be passed to a multi-agency Channel panel, which will discuss the individual referred to determine whether they are vulnerable to being drawn into terrorism and consider the appropriate support required. A representative from the school may be asked to attend the Channel panel to help with this assessment. An individual's engagement with the programme is entirely voluntary at all stages.

Guidance on Channel is available at: [Channel guidance](#).

The Department for Education has published further advice for schools on the [Prevent duty](#). The advice is intended to complement the Prevent guidance and signposts to other sources of advice and support.

[Educate Against Hate](#), is a government website designed to support teachers and leaders to help them safeguard their students from radicalisation and extremism. The platform provides free information and resources to help school staff identify and address the risks, as well as build resilience to radicalisation.

Checking the identity and suitability of visitors

All visitors will be required to verify their identity to the satisfaction of staff.

If the visitor is unknown to the setting, we will check their credentials and reason for visiting before allowing them to enter the setting. Visitors should be ready to produce identification.

Visitors are expected to sign the visitors' book and wear a visitor's badge.

All visitors to trust schools, including visiting speakers, will be accompanied by a member of staff at all times. We will not invite into a trust school any speaker who is known to disseminate extremist views, and will carry out appropriate checks to ensure that any individual or organisation using trust facilities is not seeking to disseminate extremist views or radicalise pupils or staff.

Sexual violence and sexual harassment between children

Sexual violence and sexual harassment can occur between two children of any age and sex. It can also occur through a group of children sexually assaulting or sexually harassing a single child or group of children.

Children who are victims of sexual violence and sexual harassment will likely find the experience stressful and distressing. This will, in all likelihood, adversely affect their educational attainment. Sexual violence and sexual harassment exist on a continuum and may overlap, they can occur online and offline (both physical and verbal) and are never acceptable. It is important that all victims are taken seriously and offered appropriate support. Staff should be aware that some groups are potentially more at risk. Evidence shows girls, children with SEND and LGBT children are at greater risk. Staff should be aware of the importance of:

- making clear that sexual violence and sexual harassment is not acceptable, will never be tolerated and is not an inevitable part of growing up;
- not tolerating or dismissing sexual violence or sexual harassment as "banter", "part of growing up", "just having a laugh" or "boys being boys"; and
- challenging behaviours (potentially criminal in nature), such as grabbing bottoms, breasts and genitalia, flicking bras and lifting up skirts. Dismissing or tolerating such behaviours risks normalising them.

When referring to sexual violence we are referring to sexual offences under the Sexual Offences Act 2003 as described below:

Rape: A person (A) commits an offence of rape if: he intentionally penetrates the vagina, anus or mouth of another person (B) with his penis, B does not consent to the penetration and A does not reasonably believe that B consents.

Assault by Penetration: A person (A) commits an offence if: they intentionally penetrate the vagina or anus of another person (B) with a part of their body or anything else, the penetration is sexual, B does not consent to the penetration and A does not reasonably believe that B consents.

Sexual Assault: A person (A) commits an offence of sexual assault if: they intentionally touch another person (B), the touching is sexual, B does not consent to the touching and A does not reasonably believe that B consents.

When referring to sexual harassment we mean 'unwanted conduct of a sexual nature' that can occur online and offline. When we reference sexual harassment, we do so in the context of child on child sexual harassment. Sexual harassment is likely to: violate a child's dignity, and/or make them feel intimidated, degraded or humiliated and/or create a hostile, offensive or sexualised environment.

Whilst not intended to be an exhaustive list, sexual harassment can include:

- sexual comments, such as: telling sexual stories, making lewd comments, making sexual remarks about clothes and appearance and calling someone sexualised names;
- sexual "jokes" or taunting;
- physical behaviour, such as: deliberately brushing against someone, interfering with someone's clothes (schools should be considering when any of this crosses a line into sexual violence - it is important to talk to and consider the experience of the victim) and displaying pictures, photos or drawings of a sexual nature; and
- online sexual harassment. This may be standalone, or part of a wider pattern of sexual harassment and/or sexual violence. It may include:
 - non-consensual sharing of sexual images and videos; ○ sexualised online bullying;
 - unwanted sexual comments and messages, including, on social media; and ○ sexual exploitation; coercion and threats

The initial response to a report from a child is important. It is essential that all victims are reassured that they are being taken seriously and that they will be supported and kept safe. A victim should never be given the impression that they are creating a problem by reporting sexual violence or sexual harassment. Nor should a victim ever be made to feel ashamed for making a report.

If staff have a concern about a child or a child makes a report to them, they should speak to the DSL. As is always the case, if staff are in any doubt as to what to do they should speak to the DSL.

Annex B: Role of the Designated Safeguarding Lead

An appropriate senior member of staff, from the school leadership team, will be appointed to the role of designated safeguarding lead. The designated safeguarding lead should take lead responsibility for safeguarding and child protection (including online safety). This should be explicit in the role holder's job description. This person should have the appropriate status and authority within the school to carry out the duties of the post. They should be given the time, funding, training, resources and support to provide advice and support to other staff on child welfare and child protection matters, to take part in strategy discussions and inter-agency meetings, and/or to support other staff to do so, and to contribute to the assessment of children.

Deputy designated safeguarding leads

Any deputies should be trained to the same standard as the designated safeguarding lead and the role should be explicit in their job description. Whilst the activities of the designated safeguarding lead can be delegated to appropriately trained deputies, the ultimate lead responsibility for child protection, as set out above, remains with the designated safeguarding lead, this lead responsibility should not be delegated.

Manage referrals

The designated safeguarding lead is expected to:

- refer cases of suspected abuse to the local authority children's social care as required;
- support staff who make referrals to local authority children's social care;
- refer cases to the Channel programme where there is a radicalisation concern as required;
- support staff who make referrals to the Channel programme;
- refer cases where a person is dismissed or left due to risk/harm to a child to the Disclosure and Barring Service as required; and
- refer cases where a crime may have been committed to the Police as required.

Work with others

The designated safeguarding lead is expected to:

- act as a point of contact with the three safeguarding partners;
- liaise with the headteacher or principal to inform them of issues - especially ongoing enquiries under section 47 of the Children Act 1989 and police investigations;
- as required, liaise with the "case manager" (as per Part four of Keeping Children Safe in Education) and the designated officer(s) at the local authority for child protection concerns in cases which concern a staff member;
- liaise with staff (especially pastoral support staff, school nurses, IT Technicians, SENCOs, and Senior Mental Health Leads) on matters of safety and safeguarding (including online and digital safety) and when deciding whether to make a referral by liaising with relevant agencies; and
- act as a source of support, advice and expertise for all staff.

Training

The designated safeguarding lead (and any deputies) should undergo training to provide them with the knowledge and skills required to carry out the role. This training should be updated at least every two years. The designated safeguarding lead should undertake Prevent awareness training. Training should provide designated safeguarding leads with a good understanding of their own role, and the processes, procedures and responsibilities of other agencies, particularly children's social care, so they:

- understand the assessment process for providing early help and statutory intervention, including local criteria for action and local authority children's social care referral arrangements;
- have a working knowledge of how local authorities conduct a child protection case conference and a child protection review conference and be able to attend and contribute to these effectively when required to do so;
- ensure each member of staff has access to, and understands, the trust's safeguarding policy and the school's child protection procedures, especially new and part time staff;
- are alert to the specific needs of children in need, those with special educational needs and young carers;
- understand relevant data protection legislation and regulations, especially the Data Protection Act 2018 and the General Data Protection Regulation;
- understand the importance of information sharing, both within the school, and with the three safeguarding partners, other agencies, organisations and practitioners;

- are able to keep detailed, accurate, secure written records of concerns and referrals;
- understand and support the school with regards to the requirements of the Prevent duty and are able to provide advice and support to staff on protecting children from the risk of radicalisation;
- are able to understand the unique risks associated with online safety and be confident that they have the relevant knowledge and up to date capability required to keep children safe whilst they are online at school;
- can recognise the additional risks that children with SEN and disabilities (SEND) face online, for example, from online bullying, grooming and radicalisation and are confident they have the capability to support SEND children to stay safe online;
- obtain access to resources and attend any relevant or refresher training courses; and
- encourage a culture of listening to children and taking account of their wishes and feelings, among all staff, in any measures the school may put in place to protect them.

In addition to the formal training set out above, their knowledge and skills should be refreshed (this might be via e-bulletins, meeting other designated safeguarding leads, or simply taking time to read and digest safeguarding developments) at regular intervals, as required, and at least annually, to allow them to understand and keep up with any developments relevant to their role.

Raise Awareness

The designated safeguarding lead should:

- ensure the trust's safeguarding policy and the school's child protection procedures are known, understood and used appropriately;
- ensure the school's child protection procedures are reviewed annually (as a minimum) and the procedures and implementation are updated and reviewed regularly, and work with the local governing body regarding this;
- ensure the trust's safeguarding policy and the school's child protection procedures are available publicly and parents are aware of the fact that referrals about suspected abuse or neglect may be made and the role of the school in this;
- link with the safeguarding partner arrangements to make sure staff are aware of any training opportunities and the latest local policies on local safeguarding arrangements; and
- help promote educational outcomes by sharing the information about the welfare, safeguarding and child protection issues that children, including children with a social worker, are experiencing, or have experienced, with teachers and school and college leadership staff. Their role could include ensuring that the school or college, and their staff, know who these children are, understand their academic progress and attainment and maintain a culture of high aspirations for this cohort; supporting teaching staff to identify the challenges that children in this group might face and the additional academic support and adjustments that they could make to best support these children.

Child protection file

Where children leave the school (including for in-year transfers) the designated safeguarding lead should ensure their child protection file is transferred to the new school or college as soon as possible. This should be transferred separately from the main pupil file, ensuring secure transit, and confirmation of receipt should be obtained. Receiving schools and colleges should ensure key staff such as designated safeguarding leads and SENCOs or the named person with oversight for SEN in colleges, are aware as required.

In addition to the child protection file, the designated safeguarding lead should also consider if it would be appropriate to share any information with the new school or college in advance of a child leaving. For example, information that would allow the new school or college to continue supporting victims of abuse and have that support in place for when the child arrives.

Availability

During term time the designated safeguarding lead (or a deputy) should always be available (during school hours) for staff in the school to discuss any safeguarding concerns. Whilst generally speaking the designated safeguarding lead (or deputy) would be expected to be available in person, it is a matter for individual schools, working with the designated safeguarding lead, to define what "available" means and whether in exceptional circumstances availability via phone and or Skype or other such media is acceptable.

It is a matter for individual schools and the designated safeguarding lead to arrange adequate and appropriate cover arrangements for any out of hours/out of term activities.